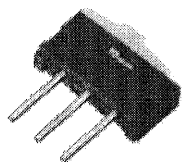
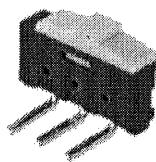
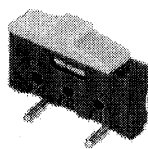


**0.1 Pitch SPDT PCB Changeover Switch****ESP SERIES**

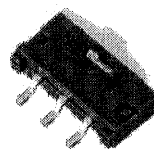
ESP10XX



ESP20XX



ESP30XX



ESP40XX

**FEATURES**

- The distance of 2 adjacent pins or stacked devices is 2.54 mm pitch
- All plastics are UL 94V-O grade fire retardant
- Low contact resistance and long mechanical life, suitable for signal switching and communication equipments

**APPLICATIONS**

- Measuring point changeover switches
- Service switch
- Controls for consumer devices

**SPECIFICATIONS**

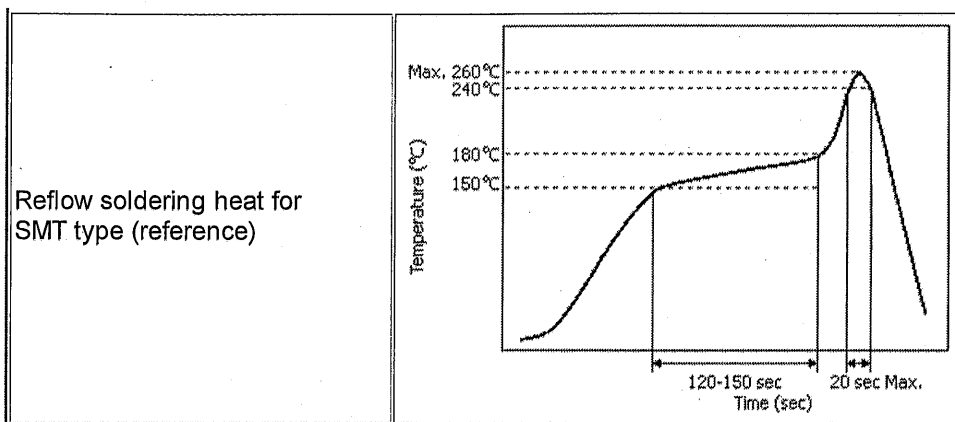
SPDT TYPE (ESP10,20,30,40 Series)

● **ELECTRICAL CHARACTERISTICS**

Contact rating	0.2A, 24VDC; 0.5A, 12VDC
Minimum contact rating	1mA, 10mV
Contact resistance	Initial: 50mΩ Max. After life test: 100mΩ Max.
Dielectric strength	2mA, 500VDC for 60sec.
Capacitance	1.5pF Max.
Insulation resistance	10000MΩ Min. under 500VDC
Mechanical life	5000 operations

● **GENERAL CHARACTERISTICS**

Temperature range	operating: -25℃ ~ +70℃
	storage: -40℃ ~ +85℃
Solder temperature	230℃ for 3 sec.
Vibration	normal operation at 10Hz to 60Hz, 1.5mm movement
Salt spray	35℃, 5% for 24 hours



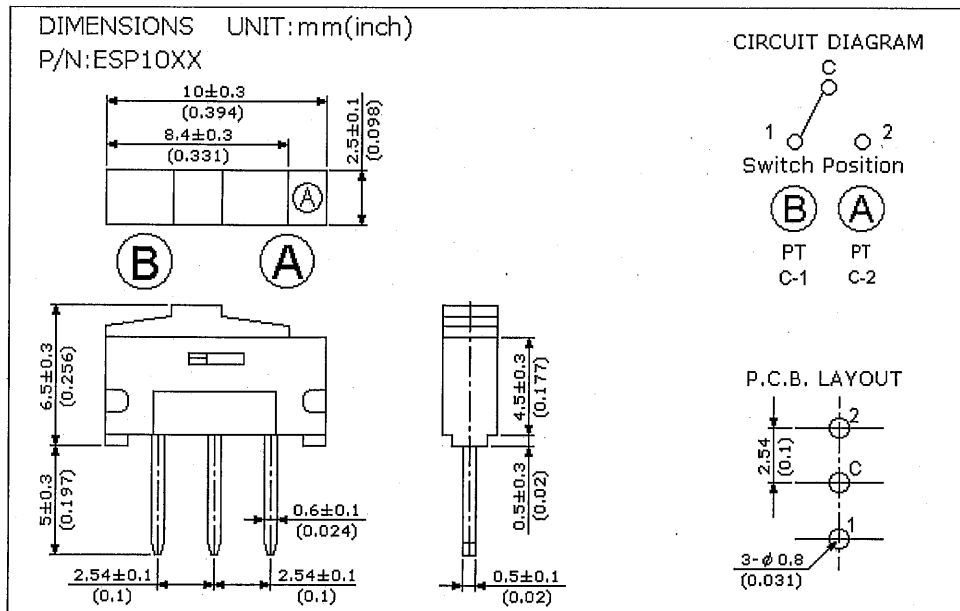
## PART NUMBERING SYSTEM

ESP XX XX XX

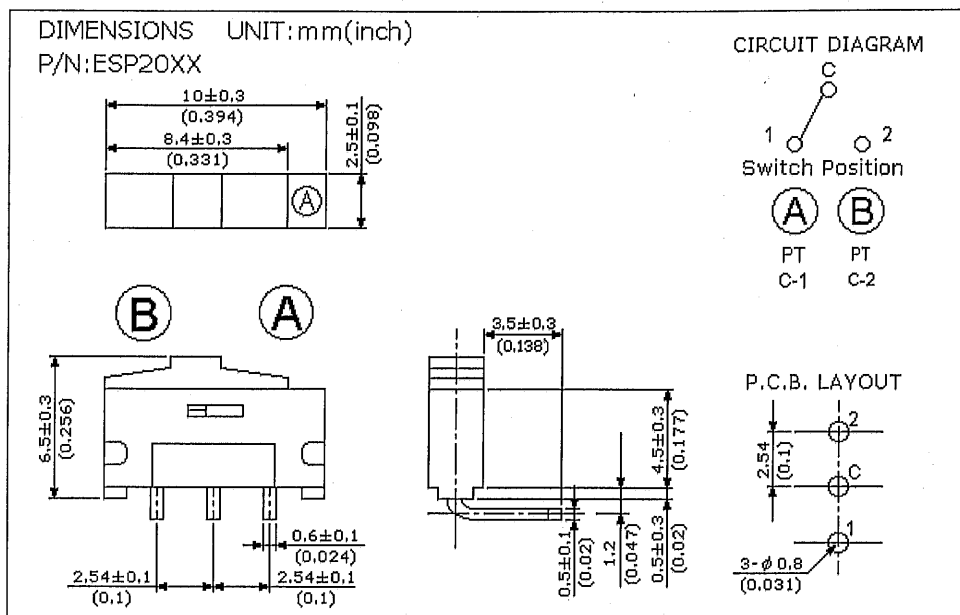
- +--- XX:Special product number
- +--- Material type:
  - 10:Standard version (Blue)
  - 20:Tropical version (Black)
  - KD:Tape & Reel Package
  - (For ESP40 series only)
- +--- Terminal:
  - 10:Straight type
  - 20:Right angle type
  - 30:Stand V-type surface mount
  - (Tropical version only)
  - 40:Gull wing type surface mount
  - (Tropical version only)
- +--- Series name:
  - ESP:SLIDE SWITCH FOR P.C.B.

## DIMENSIONS

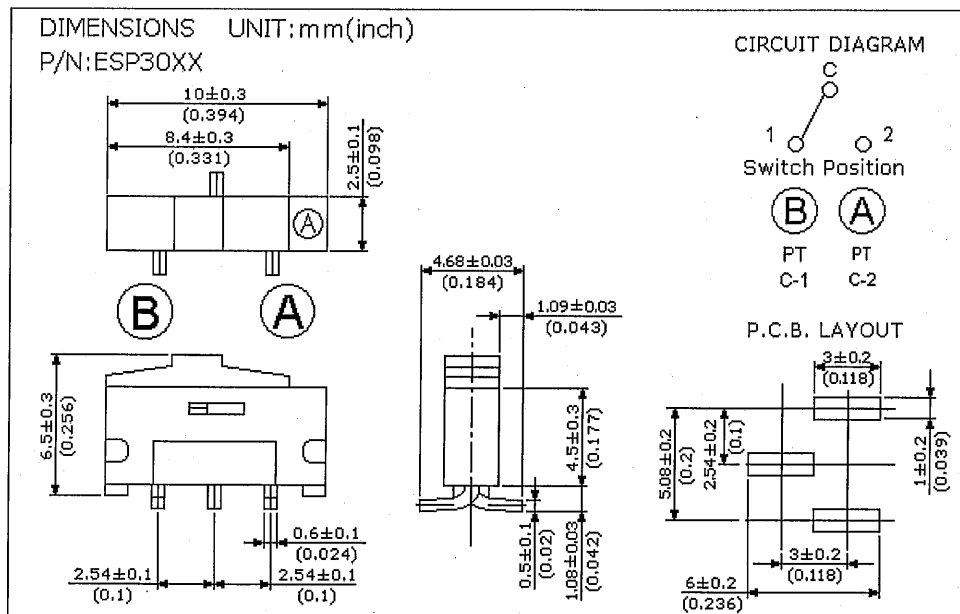
### ● Straight terminals



### ● Right angle terminals



● **Stand V-type surface mount**



● **Gull wing type surface mount**

